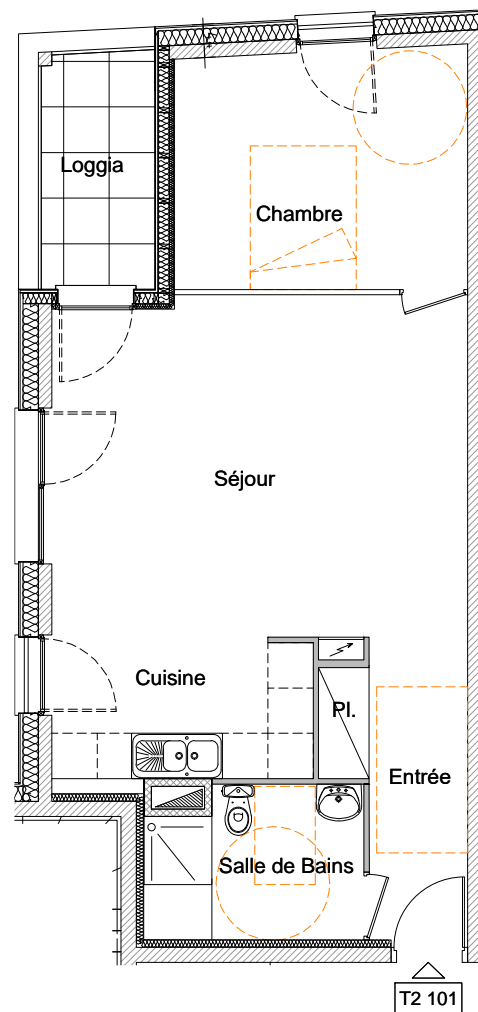
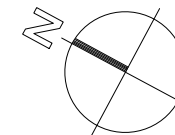
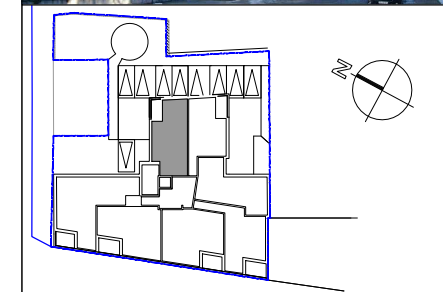


Appartement **T2 - 101**



NOVA PROMOTION
 Chemin du Moulin haut
 25 840 VUILLAFANS
 Tél : 06.07.67.23.09

**Résidence
 "Les Capucins"**
 22 et 24 rue de Besançon
 25 300 PONTARLIER



**Niveau 1
 Appartement T2**

Entrée	5.20m ²
Placard	0.98m ²
Séjour	24.77m ²
Cuisine	6.22m ²
Chambre	12.20m ²
Salle de bains	5.60m ²

Total 54.97m²

Terrasse 4.57m²

Echelle 1cm.p.m.

J.P. VARIN architecte / Besançon

