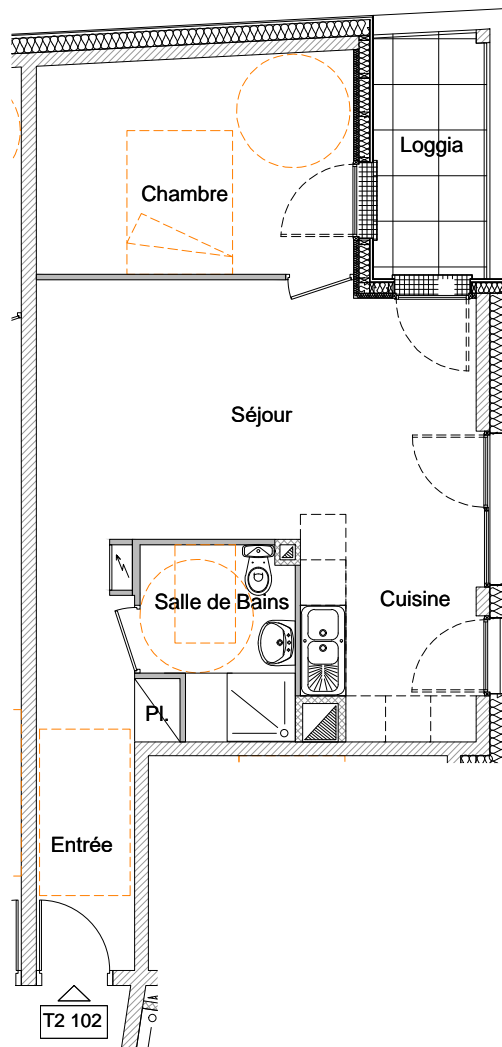
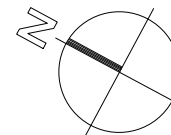
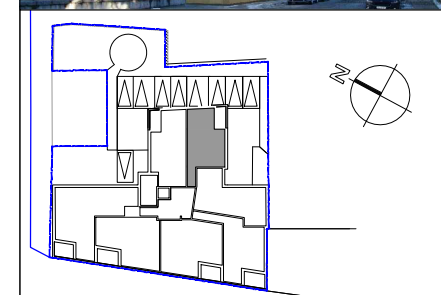


Appartement **T2 - 102**



NOVA PROMOTION
Chemin du Moulin haut
25 840 VUILLAFANS
Tél : 06.07.67.23.09

**Résidence
"Les Capucins"**
22 et 24 rue de Besançon
25 300 PONTARLIER



Niveau 1	
Appartement	T2
Entrée	7.16m ²
Placard	0.50m ²
Séjour	19.58m ²
Cuisine	5.86m ²
Chambre	12.01m ²
Salle de bains	4.73m ²

Total **49.84m²**

Terrasse 4.73m²

Echelle 1cm.p.m.



J.P. VARIN architecte / Besançon