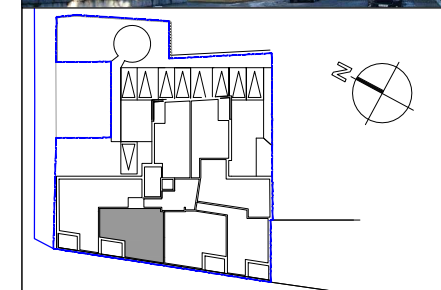
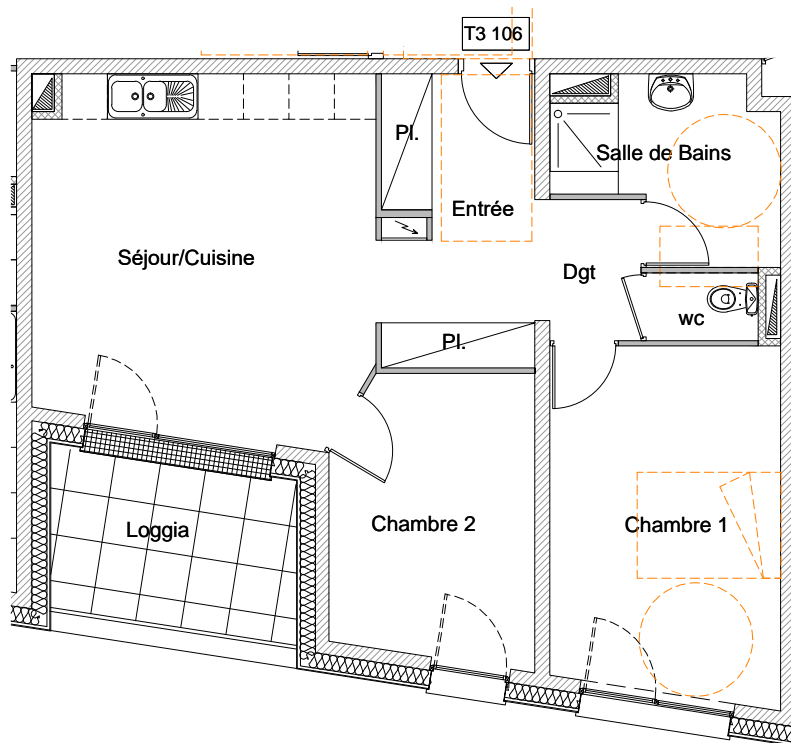
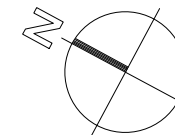


Appartement **T3 - 106**



Niveau 1	
Appartement	T3
Entrée	5.27m <sup>2</sup>
Placards	2.43m <sup>2</sup>
Séjour/Cuisine	20.96m <sup>2</sup>
Dégagement	2.56m <sup>2</sup>
Chambre 1	14.00m <sup>2</sup>
Chambre 2	9.87m <sup>2</sup>
Salle de bains	6.00m <sup>2</sup>
wc	1.33m <sup>2</sup>

**Total 62.42m<sup>2</sup>**

Terrasse 7.07m<sup>2</sup>

Echelle 1cm.p.m.

J.P. VARIN architecte / Besançon

