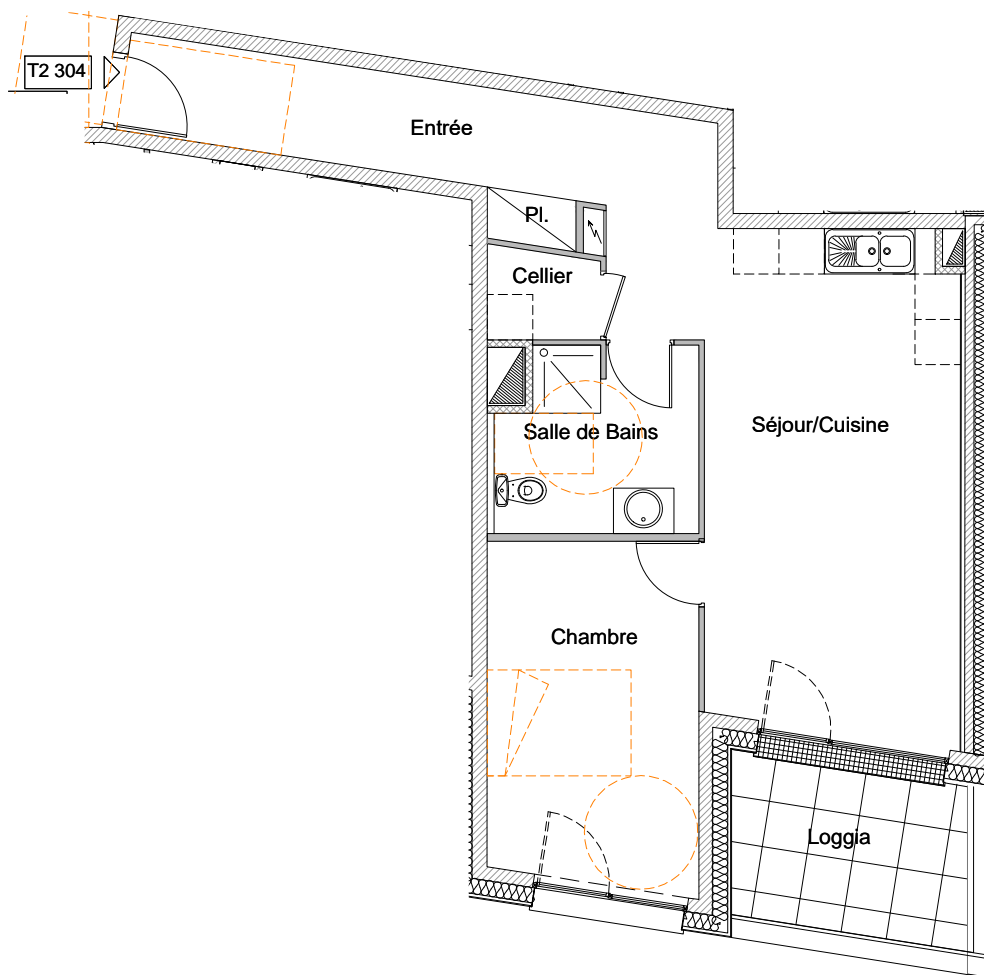
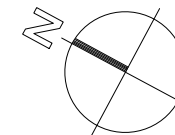
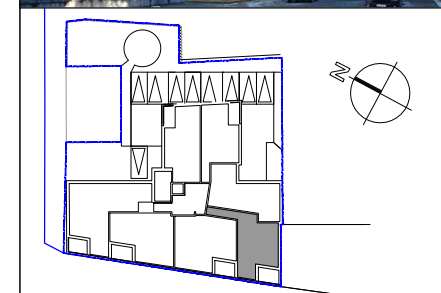


Appartement **T2 - 304**



NOVA PROMOTION
 Chemin du Moulin haut
 25 840 VUILLAFANS
 Tél : 06.07.67.23.09

**Résidence
 "Les Capucins"**
 22 et 24 rue de Besançon
 25 300 PONTARLIER



**Niveau 3
 Appartement T2**

Entrée	10.61m ²
Placard	0.80m ²
Cellier	1.73m ²
Séjour/Cuisine	24.23m ²
Chambre	12.66m ²
Salle de bains	6.40m ²

Total 56.43m²

Terrasse 6.83m²

Echelle 1cm.p.m.



J.P. VARIN architecte / Besançon