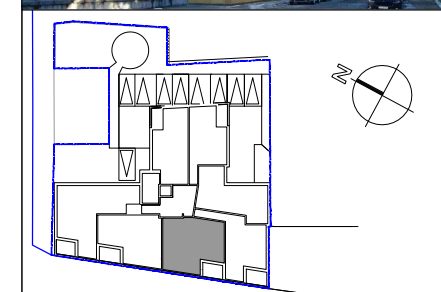
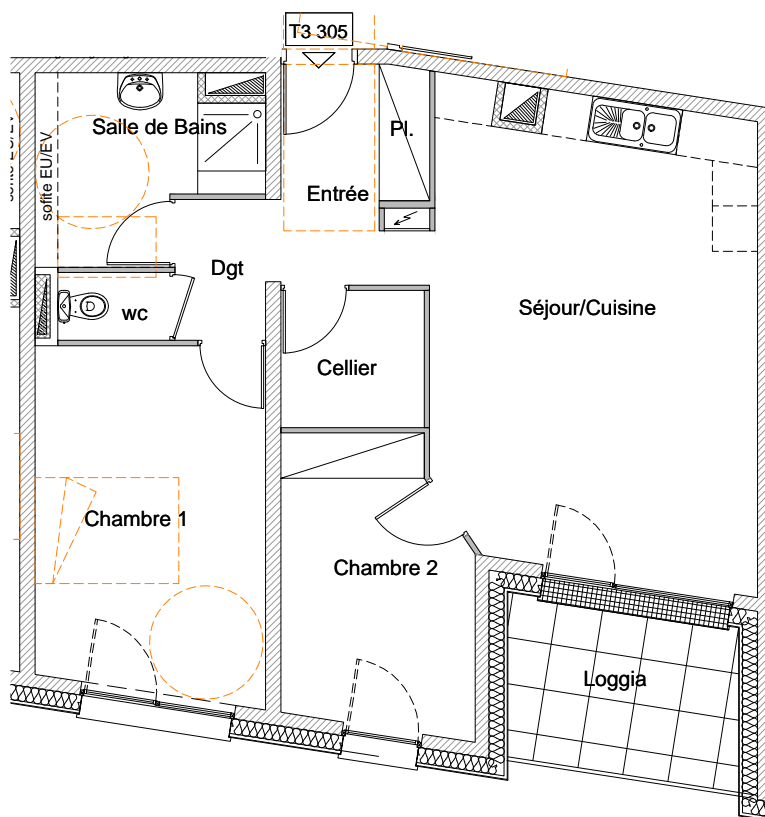
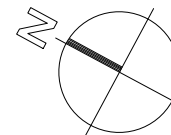


Appartement **T3 - 305**



**Niveau 3**  
**Appartement T3**

Entrée	4.49m <sup>2</sup>
Placard	1.18m <sup>2</sup>
Cellier	3.44m <sup>2</sup>
Séjour/Cuisine	26.42m <sup>2</sup>
Dégagement	2.23m <sup>2</sup>
Chambre 1	13.98m <sup>2</sup>
Chambre 2	9.28m <sup>2</sup>
Salle de bains	6.25m <sup>2</sup>
wc	1.33m <sup>2</sup>

**Total 68.60m<sup>2</sup>**

Terrasse 6.64m<sup>2</sup>

Echelle 1cm.p.m.

J.P. VARIN architecte / Besançon

