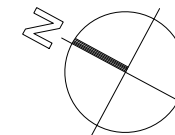


Appartement **T3 - 306**



NOVA PROMOTION

Chemin du Moulin haut

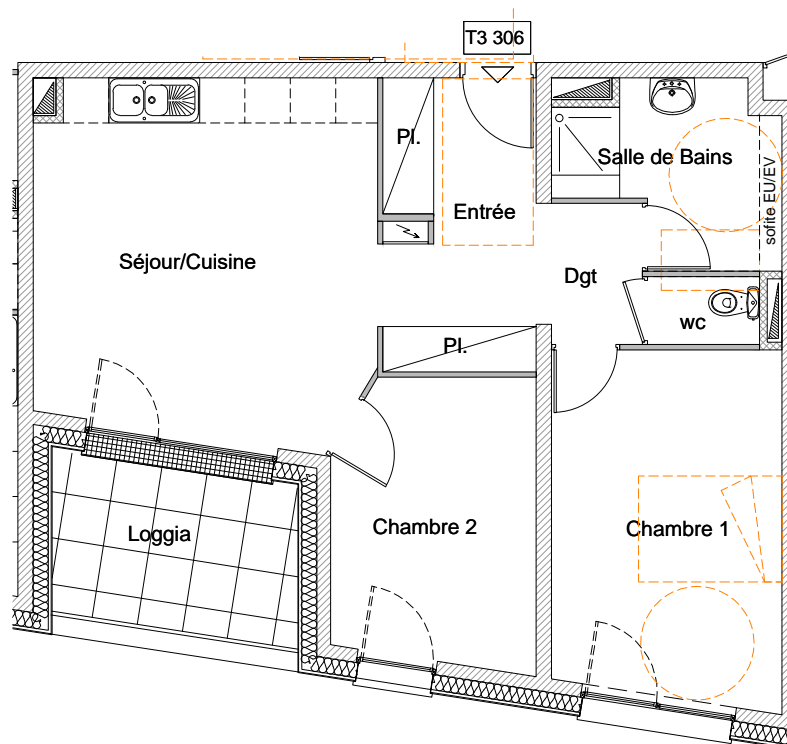
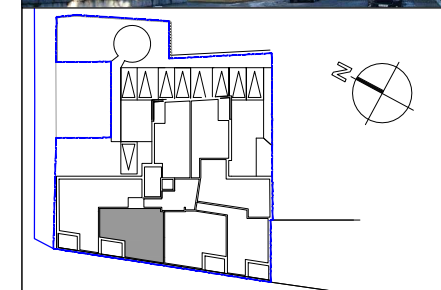
25 840 VUILLAFANS

Tél : 06.07.67.23.09

Résidence
"Les Capucins"

22 et 24 rue de Besançon

25 300 PONTARLIER



Niveau 3

Appartement T3

Entrée	5.27m ²
Placards	2.43m ²
Séjour/Cuisine	20.96m ²
Dégagement	2.56m ²
Chambre 1	14.00m ²
Chambre 2	9.87m ²
Salle de bains	6.00m ²
wc	1.33m ²

Total 62.42m²

Terrasse 7.07m²

Echelle 1cm.p.m.



J.P. VARIN architecte / Besançon